



Customer Installable Parts

Upper Cargo Structure & Bag

e Series and i Series Models Only

Kit Number: 1689500001



Contents

- 1 handlebar bag
- 1 bag lid
- 1 wire mounting frame
- 1 control shaft clamp
- 1 clamp screw
- 2 button head screws

Specifications

- 10 lb. maximum carrying capacity
- Polypropylene and polyethylene construction
- Polyester and mesh soft-sided pockets with cord locks
- Stainless steel snaps on bag lid
- Hook and loop attachment straps
- Powder-coated stainless steel wire mounting frame

Tools Required

- 2.5mm hex wrench
- 4mm hex wrench

Before you begin:

Do not use the parking stand to support the Segway HT while performing this procedure. The parking stand is not designed to withstand the forces that may be generated. Instead, lay the Segway HT down on its back side or support it with other objects so that you have easy access to the front of the handlebar and control shaft.



WARNING

Always shut down your Segway HT and unplug the charge cord before performing any maintenance or installing any part or accessory. Follow these instructions carefully. Failure to follow these instructions carefully could damage your Segway HT and render it unsafe to use.

> Installation

Note

Replace any fasteners you remove when performing this installation with the new fasteners included in this kit .

Step 1

If present, remove the two button head screws located on the bottom of the handlebar using a 4mm hex wrench.

Step 2

Align the holes in the wire frame with the screw locations in the bottom of the handlebar so that the frame is on the front side of the control shaft.

Step 3

Install the two button head screws through the holes in the wire frame and into the bottom of the handlebar using a 4mm hex wrench and torque to 7.5 N-m.

Step 4

Install the clamp on the control shaft just above the height adjustment collar with the hook facing forward and up.

Step 5

Slide the clamp up to the wire frame so that the wire frame rests in the hook.

Step 6

Install the clamp screw and with a 2.5mm hex wrench torque to 1.5 N-m. (The gap between the halves of the clamp should be about 4mm.)

Step 7

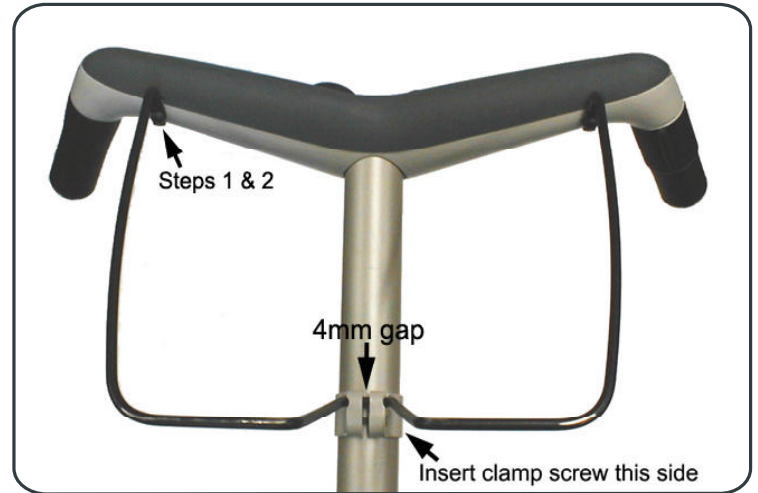
Lightly tap the wire frame so that it snaps in the hook of the clamp.

Step 8

Drape the cargo bag over the handlebar so that the Display and Key Port are not obstructed.

Step 9

Secure the hook and loop straps around the wire frame at the bottom and sides of the bag.



LIMITED WARRANTY The Segway HT Upper Cargo Structure and Bag is an accessory covered by the Segway™ Human Transporter Limited Warranty (copy delivered with this kit).



Questions?

If you are missing a part, or if you need to return the product please contact Segway Customer Service at 866.4SEGWAY (866.473.4929) or on our website at www.segway.com/support/contact_us.html.